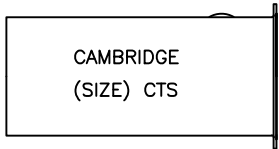


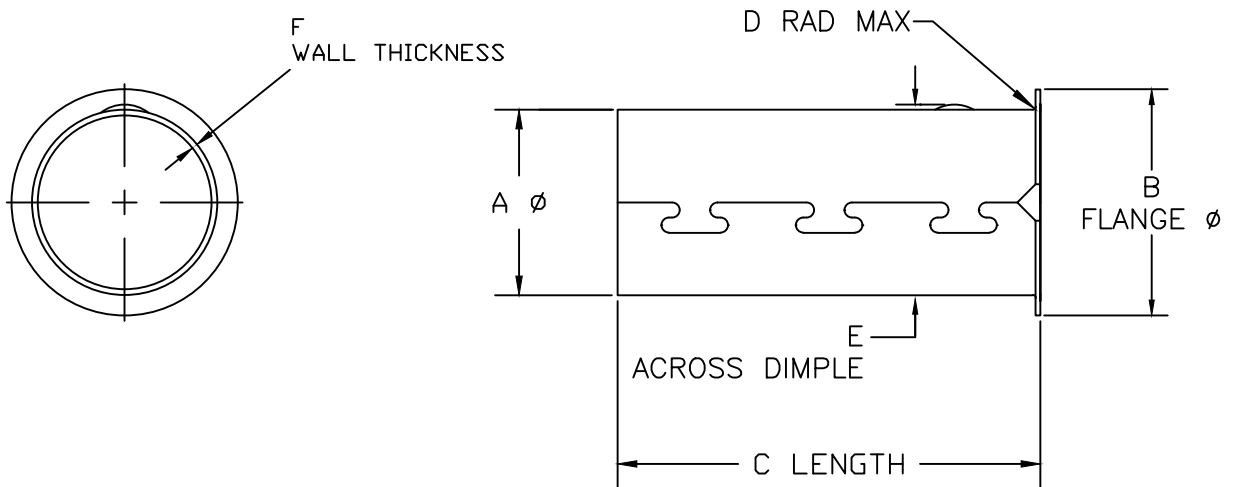
Cambridge Brass
P.O. Box 249
140 Orion Place
Cambridge, Ontario
Canada N1R 5V1
Tel: (519) 621-5520
Fax: (519) 621-8674
http://www.cambridgebrass.com



SERIES NO. 86

CTS TUBE INSERT

- FOR USE WITH POLYTHEYLENE TUBING WITH COPPER TUBE SIZE (CTS) OUTSIDE DIAMETER AND WALL THICKNESS DIMENSION RATIO OF SDR 9 PER STANDARDS ASTM D2737 OR AWWA 901



PARTS AND MATERIAL:

1. INSERT MADE OF ANSI TYPE 304 STAINLESS STEEL

FEATURES:

- FOR USE WITH SDR 9 CTS TUBE
- SIZE AND "CTS" STAMPED ON THE PART
- DIMPLES AND COLLAR TO POSITION AND RETAIN WITHIN PIPE

SIZE	PART #	A	B	C	D	E	F
3/4"	86-3	.655	.80	1.65	.02	.685	.031±.002
1"	86-4	.845	1.05	1.80	.02	.880	.031±.002
1 1/4"	86-5	1.030	1.30	2.36	.02	1.075	.031±.002
1 1/2"	86-6	1.225	1.55	3.00	.02	1.269	.031±.002
2"	86-7	1.598	2.05	3.25	.02	1.630	.027±.002

Cambridge Brass considers the information in this submittal form to be correct at the time of publication. Item and option availability, including specifications, are subject to change without notice.

Submitted by: